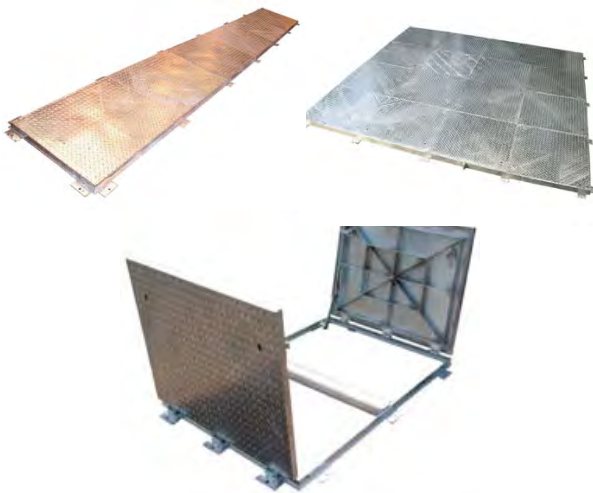


## DUCTILE IRON

A full range of iron manhole covers, gully gratings and surface boxes manufactured in accordance with BS EN124:1994.

The majority hold BSI Kitemark certification and, where applicable, meet Highways Agency specification HA104/02 and BS7903:1997.

All Covers & Frames are available in a variety of sizes in the following loadings: A15, B125, C250, D400, E600 and F900.



## STEEL

A full range of fabricated steel covers and frames for all applications. All are available in either hot dip galvanised to EN1461, bitumen coated mild steel, stainless steel or aluminium.

Cover designs include solid top, recessed trays, recess block pavements, reservoir covers, hinged, turnbuckle locking, airtight. A bespoke design service is also available to suit exact requirements.

All Covers & Frames are made in accordance with either BS EN124:1994 or FACTA class loadings.

## COMPOSITE

The multi-directional surface pattern provides an average skid resistance value that complies with the stated minimum advisory limits recommended by the County Surveyors Society working party data collection unit 1996.

All covers are less than 25kg which conforms to current manual handling regulations and are chemically resistant to engine oil, diesel and petrol.

Tested in accordance with BS EN124:1994 loading. Available in sizes: 290x275, 450x300, 450x450, 600x450, 600x600mm.

